



# WELDmatic

**lmb**

quality has a name

## Sterile Medical PVC Tube Welder with GREEN Technology

- \* It simply uses the known **RF (Radio Frequency)** technologie for all phases; Sealing – Welding.
- \* It connects medical PVC tubes **without disposables; no knife – no blade – no copper wire**. Ultimately, **negligible odor, waste and exhaust**, it gives GREEN output by using RF technology. Integrated Hepa filter system guarantees the trapping of PVC particles.
- \* Smooth sealing– welding process with **no preheating** technology
- \* WELDmatic enables **sterile connections of all wet and dry** tubing combinations of blood bag tubes from various ranges. (tube diameter from 3.8 mm to 4.8 mm)
- \* **Patented Automatic Gate Opening**  
WELDmatic has unique and patented “automatic opening of liquid flow” at the connection point for dry-dry tubes. Optionally closed connection points can be opened by using a tube stripper or with fingers.



## Intended Use

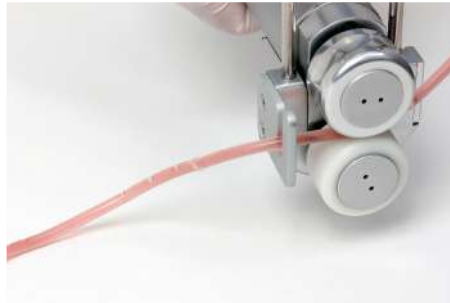
- \* Component pooling
- \* Connection of Leukofilter system
- \* Pathogen bag system connection
- \* Cell washing connection
- \* Sampling for QM Control
- \* Any blood bag sets modification



## Unique Solution for Tube Gate Opening



For dry tubes the welded connection place is automatically opened



Compatible with manual and automatic strippers. The welded connection place for wet tubes can be opened with tube strippers, manual operation not needed.

## Specifications

<b>Artical Code</b>	Tube Weldmatic TW 471111	<b>Altitude</b>	Operable until 2500m
<b>Material</b>	PVC Blood bag tubings and other related tubes	<b>Welding Time</b>	15 sec to 21 sec
<b>Tubing Size</b>	Outer Diameter 3,9mm to 4,8mm Inner Diameter 2,9mm to 3.2mm	<b>Dimension</b>	230mm width, 420mm dept, 125mm height
<b>Power Supply</b>	100 V AC to 240 V AC 11% 50 to 60 Hz	<b>Bi directional</b>	Data transfer
<b>Ambient Temp</b>	10 C to 40 C	<b>Barcode Reader</b>	yes optional
<b>Humidity</b>	10% to 80%	<b>iQ-Link SW</b>	Software for data collection and data transfer
		<b>Color T-Screen</b>	with guiding symbol



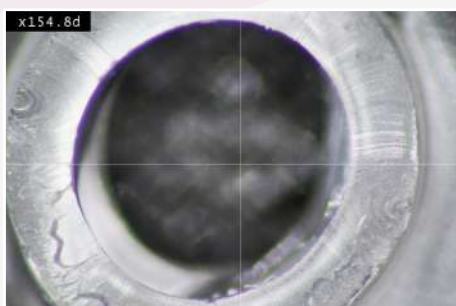
**SINGLE TOUCH ONSET**  
Easy and visible docking process



**RF SEALING**  
Detachment of the tubes and precise reconnection



**RF DOCKING**  
Aligned welding with desired tubes



No intervention with interior of tube



Impeccable seal quality



100+ Newton tensile strength